

Network Operations Center

IP address configuration for following Volfoni devices :

1. SCC-V
2. SCC-H
3. SCD : SCD CONTROLLER (Electronic module)
4. SCC NEO

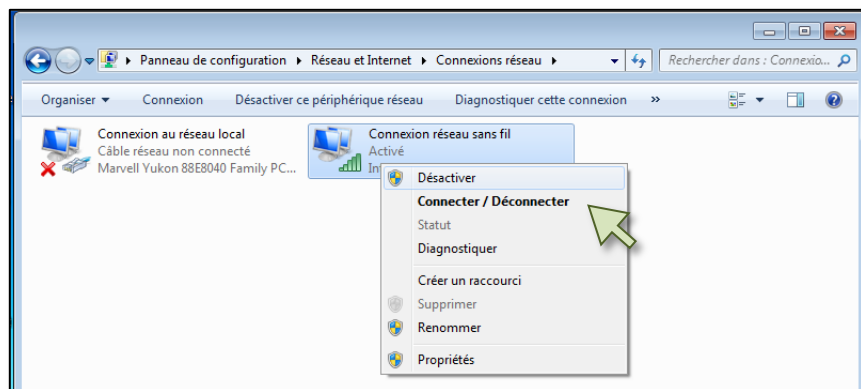
By default, we have fixed a static IP address in your Volfoni device :

IP address: 192.168.2.150

Subnet Mask: 255.255.255.0

It is possible to change this address and to fix your own IP address in order to use your Volfoni device remotely with other equipment on the same network. You'll find just below the steps to do that:

1/ First, you must disable the WIFI access on your computer.



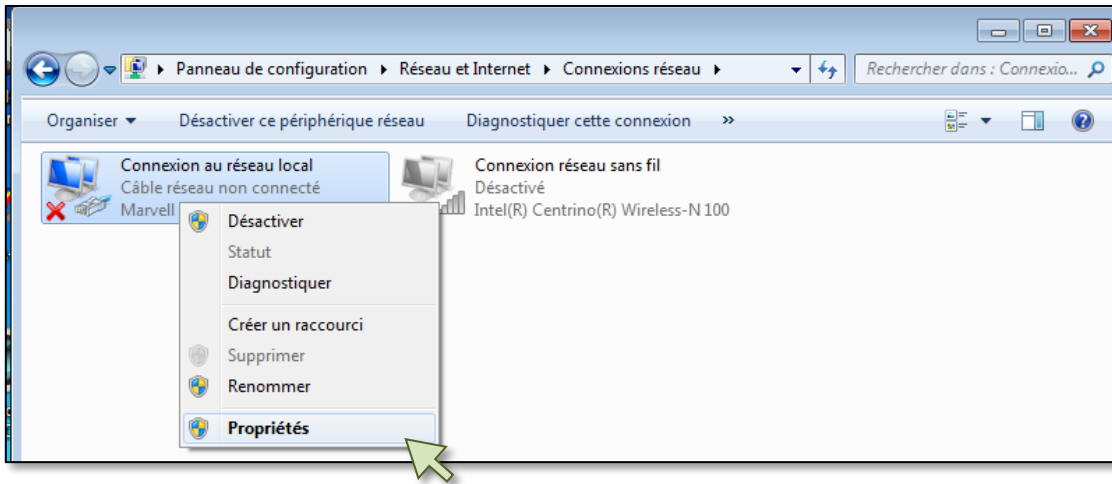
2/ After, you must set the local network of your computer.

At the level of the local network connection icon, make a right click on the mouse and select "Properties".

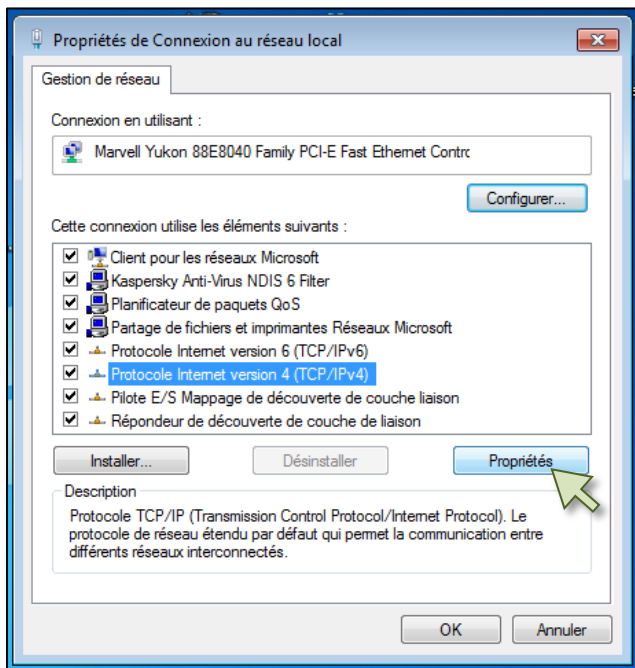
<u>Reference</u> : MDV0006
<u>Revision</u> : V01
<u>Date</u> : 2013-10-09
<u>Author</u> : JTH

Volfoni R&D
Les bureaux du Parc
2474 RD6007 – Le logis de Bonneau
06270 Villeneuve-Loubet - France

Network Operations Center



3/ Go on “Internet Protocol (TCP/IPv4)” and select “Properties”.



4/ Select the option “Use the following IP address”.

Now, you must fix a static IP address for your computer.

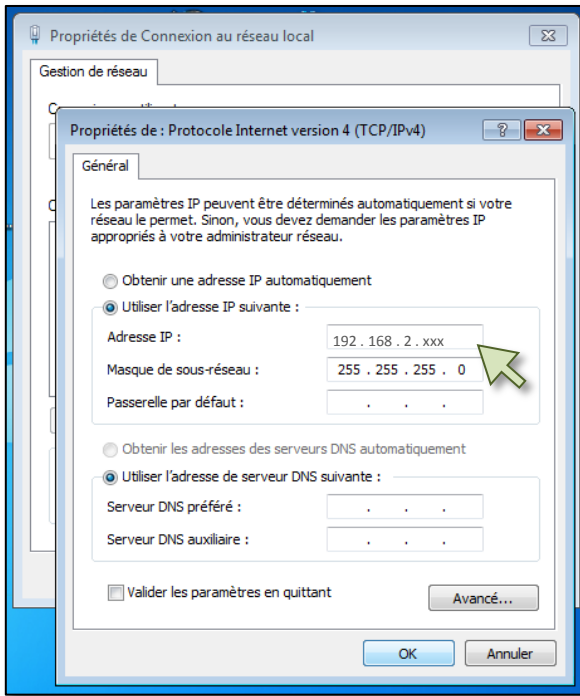
Enter an IP address like: **192.168.2.xxx** and the Subnet Mask: **255.255.255.0**.

Be careful, do not use the IP address **192.168.2.150** because it's the static IP address of the Volfoni device

Click on “OK” to validate these settings.

Reference	: MDV0006
Revision	: V01
Date	: 2013-10-09
Author	: JTH

Volfoni R&D
 Les bureaux du Parc
 2474 RD6007 – Le logis de Bonneau
 06270 Villeneuve-Loubet - France

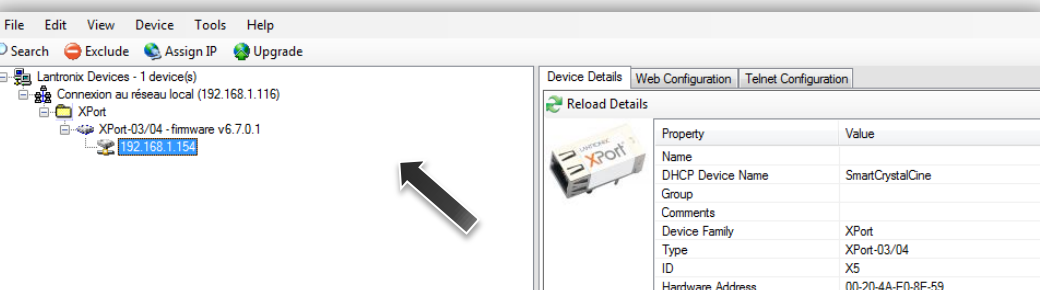


5/ Connect the computer and the Volfoni device with a straight Ethernet cable (RJ45 connector).

6/ Power ON the Volfoni device and wait about 30 seconds.

7/ Run the program « DeviceInstaller » in order to detect the NOC.
 (Software Link: [here](#)).

When the NOC is detected, the IP address is assigned to it in the left window:

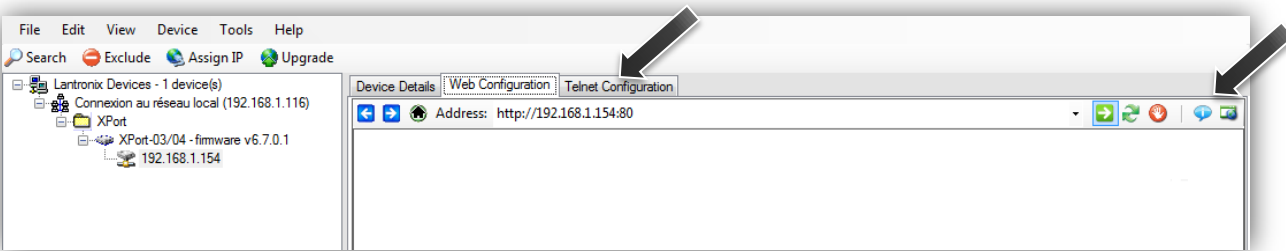


Be careful, the IP address of the Volfoni device must be in the same subnet that your network configuration.

8/ Click on the tab « Web Configuration », then 

Reference	: MDV0006
Revision	: V01
Date	: 2013-10-09
Author	: JTH

Volfoni R&D
 Les bureaux du Parc
 2474 RD6007 – Le logis de Bonneau
 06270 Villeneuve-Loubet - France

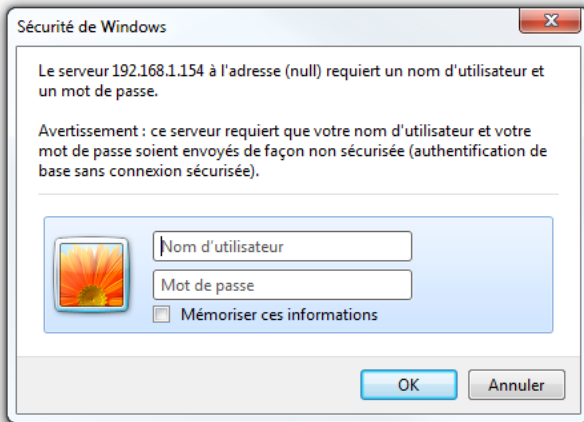


<u>Reference</u> : MDV0006
<u>Revision</u> : V01
<u>Date</u> : 2013-10-09
<u>Author</u> : JTH

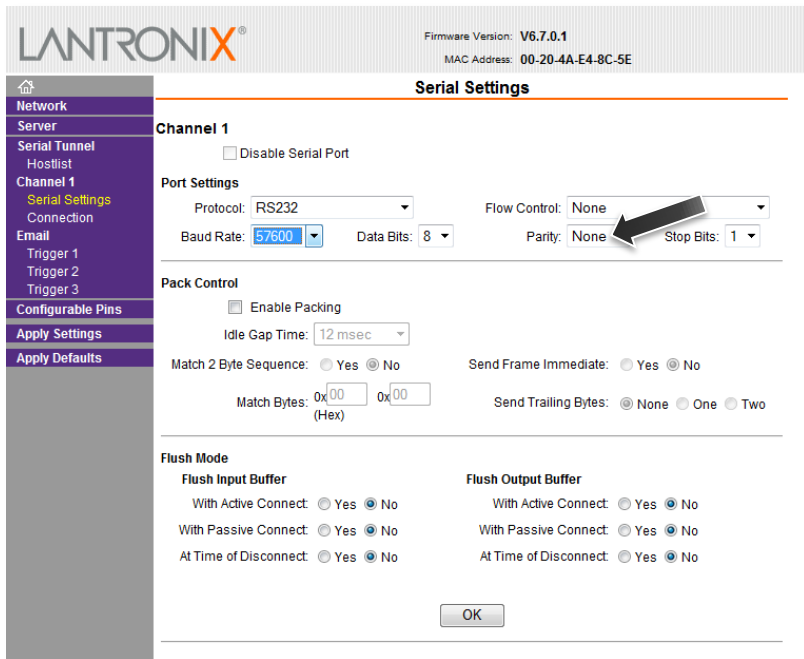
Volfoni R&D
Les bureaux du Parc
2474 RD6007 – Le logis de Bonneau
06270 Villeneuve-Loubet - France

Network Operations Center

- 9/** By default, there is no "Username" and "Password."
 Click « Ok ».



- 10/** The LANTRONIX - XPORT window will open.
 Select in the left tab « Channel 1 » the parameter « Serial Setting ».



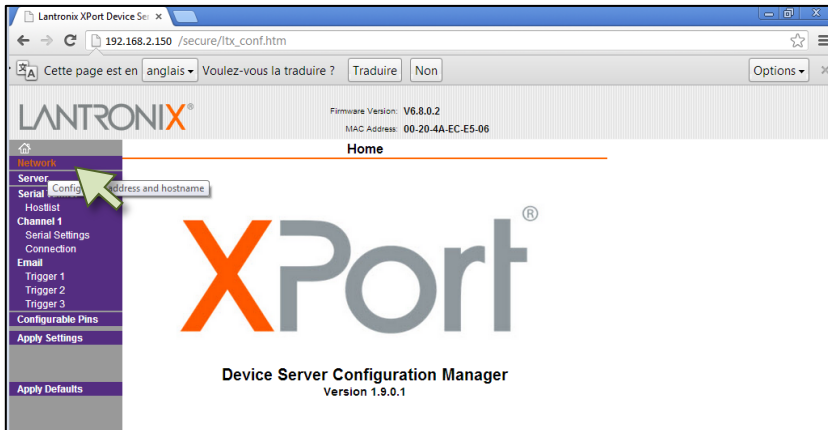
- Modify the « Baud Rate » to 57600 and click « OK ».

<u>Reference</u>	: MDV0006
<u>Revision</u>	: V01
<u>Date</u>	: 2013-10-09
<u>Author</u>	: JTH

Volfoni R&D
 Les bureaux du Parc
 2474 RD6007 – Le logis de Bonneau
 06270 Villeneuve-Loubet - France

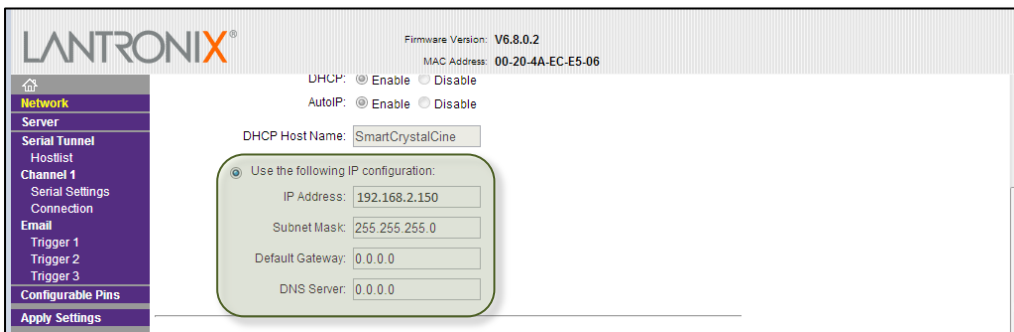
Network Operations Center

11/ Select “Network” in the menu bar on the left.



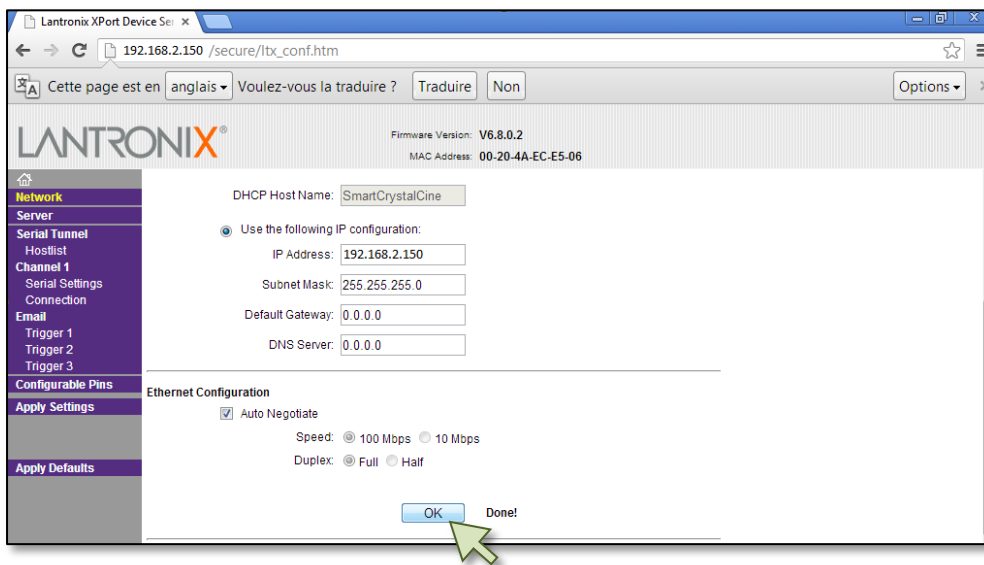
You can change the IP address here.

Be careful to choose an IP address for the Volfoni device in the same subnet than your equipment.



Click on “OK” to validate these changes.

The message “Done!” appears to indicate that the action has been taken account.



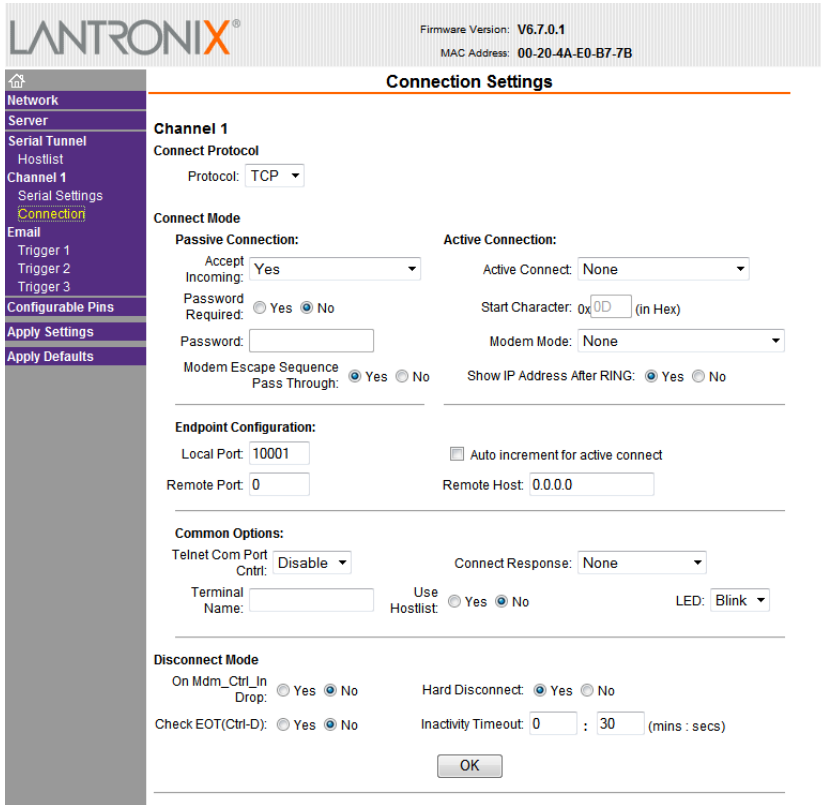
Reference : MDV0006
 Revision : V01
 Date : 2013-10-09
 Author : JTH

Volfoni R&D
 Les bureaux du Parc
 2474 RD6007 – Le logis de Bonneau
 06270 Villeneuve-Loubet - France

Network Operations Center

12/ Select the left tab "Connection".

- Enter "30" secs in the "Inactivity Timeout:"
- Then click "OK".



LANTRONIX® Firmware Version: V6.7.0.1
MAC Address: 00-20-4A-E0-B7-7B

Connection Settings

Channel 1

Connect Protocol: TCP

Connect Mode

Passive Connection: Accept Incoming: Yes, Password Required: No, Modem Escape Sequence Pass Through: Yes

Active Connection: Active Connect: None, Start Character: 0x0D (in Hex), Modem Mode: None, Show IP Address After RING: Yes

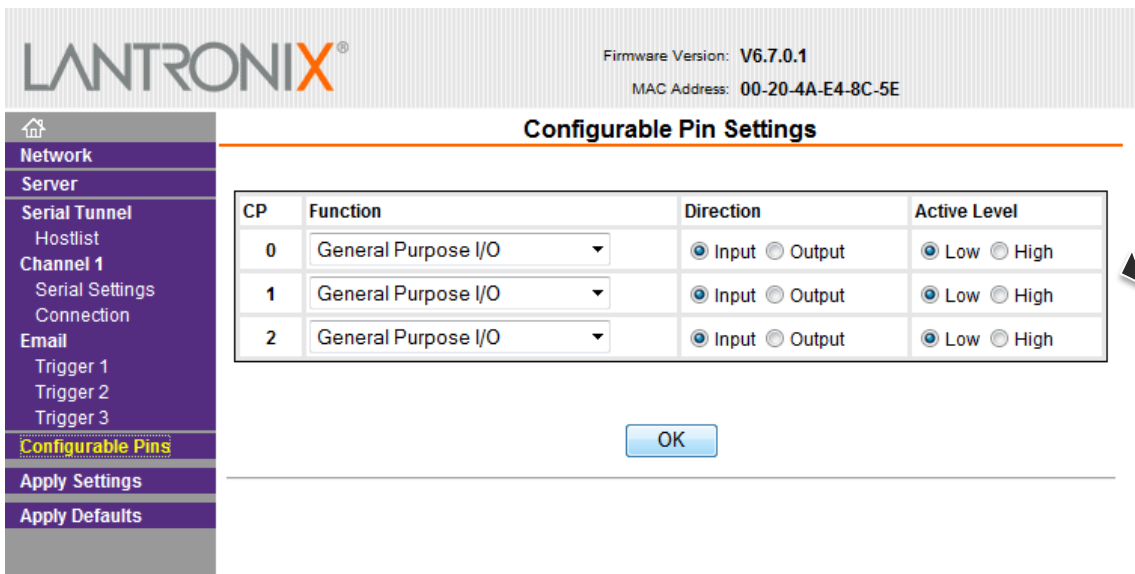
Endpoint Configuration: Local Port: 10001, Remote Port: 0, Remote Host: 0.0.0.0

Common Options: Telnet Com Port Cntrl: Disable, Connect Response: None, Terminal Name: , Use Hostlist: No, LED: Blink

Disconnect Mode: On Mdm_Ctrl_In Drop: No, Hard Disconnect: Yes, Check EOT(Ctrl-D): No, Inactivity Timeout: 0 : 30 (mins : secs)

OK

13/ Select the left tab « Configurable Pins ».



LANTRONIX® Firmware Version: V6.7.0.1
MAC Address: 00-20-4A-E4-8C-5E

Configurable Pin Settings

CP	Function	Direction	Active Level
0	General Purpose I/O	<input checked="" type="radio"/> Input <input type="radio"/> Output	<input checked="" type="radio"/> Low <input type="radio"/> High
1	General Purpose I/O	<input checked="" type="radio"/> Input <input type="radio"/> Output	<input checked="" type="radio"/> Low <input type="radio"/> High
2	General Purpose I/O	<input checked="" type="radio"/> Input <input type="radio"/> Output	<input checked="" type="radio"/> Low <input type="radio"/> High

OK

Verify if « CP1 » is configured in « General Purpose I/O » and « Input ».

Reference	: MDV0006
Revision	: V01
Date	: 2013-10-09
Author	: JTH

Network Operations Center

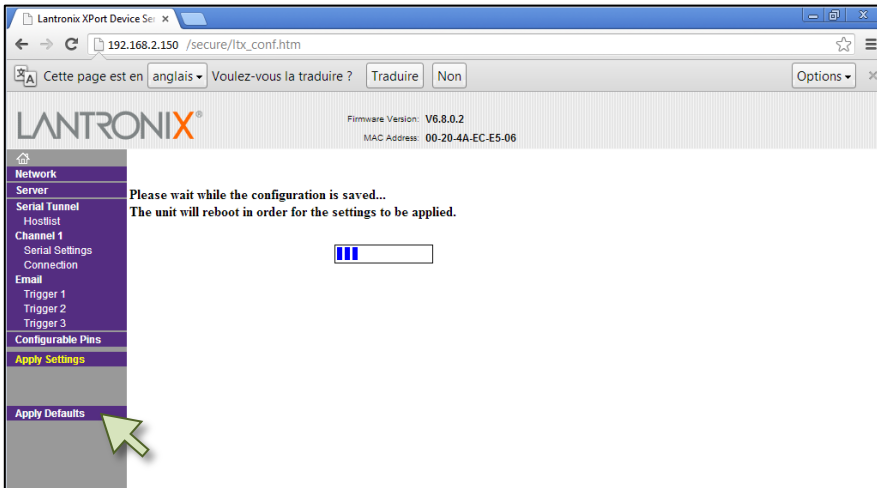
14/ Select “*Apply Settings*” in the menu bar on the left.

Wait until the end of the loading.

Lantronix device reboots automatically and returns you to the main page.

The device is now configured correctly.

Close this window and disconnect the Ethernet cable between the Volfoni device and the computer.



15/ If you have several Volfoni devices, you must repeat the steps 5 to 12 and choose one different IP address for each unit.

COMMUNICATION PROTOCOL

Each command is based on a string followed by a line feed <LF> ASCII character (0x0A).

An acknowledgment is sent by the Volfoni device after each command is received. This acknowledgment consists of the string “ACK” + <LF> if the command has been understood. Otherwise, the string “NACK” + <LF> is sent.

For command with response, after the acknowledgment, the response is sent by the Volfoni device. The response is also based on a string followed by a line feed <LF> ASCII character (0x0A).

<u>Reference</u>	: MDV0006
<u>Revision</u>	: V01
<u>Date</u>	: 2013-10-09
<u>Author</u>	: JTH

Volfoni R&D
 Les bureaux du Parc
 2474 RD6007 – Le logis de Bonneau
 06270 Villeneuve-Loubet - France

Network Operations Center

Commands list :

2DMODE

Description : go to 2D Mode

Acknowledgment : ACK / NACK

Response : Not applicable

3DMODE

Description : go to 3D Mode

Acknowledgment : ACK / NACK

Response : Not applicable

Remarks :

We do not have any documentation available regarding how to create “Macros” on servers.
You have to approach your supplier

<u>Reference</u> : MDV0006
<u>Revision</u> : V01
<u>Date</u> : 2013-10-09
<u>Author</u> : JTH

Volfoni R&D
Les bureaux du Parc
2474 RD6007 – Le logis de Bonneau
06270 Villeneuve-Loubet - France