

# Film-Tech

The information contained in this Adobe Acrobat pdf file is provided at your own risk and good judgment.

These manuals are designed to facilitate the exchange of information related to cinema projection and film handling, with no warranties nor obligations from the authors, for qualified field service engineers.

If you are not a qualified technician, please make no adjustments to anything you may read about in these Adobe manual downloads.

[www.film-tech.com](http://www.film-tech.com)



**Load500  
Serial Communication  
Software for the CP500  
Cinema Processor**

## **1.1 About Load500**

Load500 is a specific DOS based program which has been developed to make the task of transferring alignment and format information to and from a computer both simpler and quicker. The program includes a special option which allows CP500 operating software to be updated easily from new files supplied on disc.

## **1.2 About this Manual**

This manual is intended to be a guide for anyone installing and maintaining Dolby CP500 cinema processors. The Load500 program requires a 486 PC (or better) to run the program. This manual assumes minimal understanding of computers and the DOS operating system.

## **1.3 Load500 Software and Required Equipment**

The Load500 software requires the following minimum configuration:

- 33 MHz, 486-based PC with 4MB RAM, hard disk, 1.44 MB 3.5" floppy disk drive, and high-speed FIFO serial I/O card, with DOS operating system
- VGA Multi-sync Monitor
- Keyboard
- Load500 Program and Installation Diskette
- Load500 User's Manual
- 15-foot serial data cable, D-type 9-pin Male to D-type 9-pin Female

## **1.4 Software Installation**

The Load500 software and support files are supplied on the 3.5 inch floppy labeled *Load500 Program Disk*. The user is encouraged to make a backup copy of this diskette and keep it in a safe location. They should be copied to a subdirectory on the hard drive named C:\LOAD500.

If the user needs to re-install or upgrade the Load500 software, simply insert the *Load500 Program Disk* and copy all of the files into the Load500 directory.

## 1.5 Cable requirements

The RS232 link between the CP500 and computer serial port requires a screened D-type 9-pin Male to D-type 9-pin Female with pin to pin connections.

All cables connecting the CP500 and the PC should be attached with the power to both the CP500 and the PC turned off.

The cable should be connected between the serial data port on the PC and the **Serial Data** connector on the back of the CP500. Mounting screws should be used to prevent disconnection from the PC or CP500.

## 2.1 Running the program

From the directory where the Load500 program has been copied, type load500 and press Enter. When the program is opened for the first time the screen will look as shown below.

```
Load500 Main Menu
1. Upgrade Software
2. Download Parameters from CP500 ▶
3. Upload Parameters to CP500 ▶
4. Communications Settings ▶
5. Save Configuration
6. Exit
Choose=↓ Exit=ESC

Status
Port: COM1 38400 Baud
Sector File:
dcp16.sct
Parameter File:
brain.dmp

Help
Load new system software into the CP500, saving and reloading all parameters.

Messages
Opening configuration file load500.cfg
Could not open configuration file load500.cfg. Using defaults.

Load500 Version 1.00 (c) Copyright 1996 Dolby Laboratories, Inc.
```

## 2.2 Navigating the Menus

The Load500 software Version 1.00 is completely keyboard driven. A pointing device such as a mouse or trackball is not supported. The software is based on pop-out and drop-down menus. Moving around in these menus is accomplished by using the following keys:

**Enter**, **Esc** (Escape), and the arrow keys **↑**, **→**, **←**, and **↓**.

Any bold letter in the item title (such as the **U** in **1. Upgrade Software**) or the item number can be used as a shortcut key to get to that item faster than using the arrow keys. For example, rather than pressing the **↓** key to get from the **1. Upgrade Software** item to the **5. Save Configuration** item, the **s** key (always lower case only) or the number **5** can be pressed.

Highlighted menu items may be selected by pressing the **Enter** key. Pressing the **Esc** key leaves the current menu.

## 2.3 Screen Layout

The screen is made up of several sections, only one of which is used for navigating through the software. The area in the top left of the screen called **Load500 Main Menu** lists the available menu options. The six options can be highlighted with the up ↑ and down ↓ arrow key and selected using the right arrow key → or the enter key. Typing the appropriate lower case letter or the item number also allows immediate selection of each option.

The area to the top right of the screen labelled **Status** shows the communication status of the software and the names of the files in use. The default name for the file containing CP500 operating software to be loaded is dcp16.sct. Brain.dmp is the default name for the file used to store the CP500 parameters when downloaded from the processor.

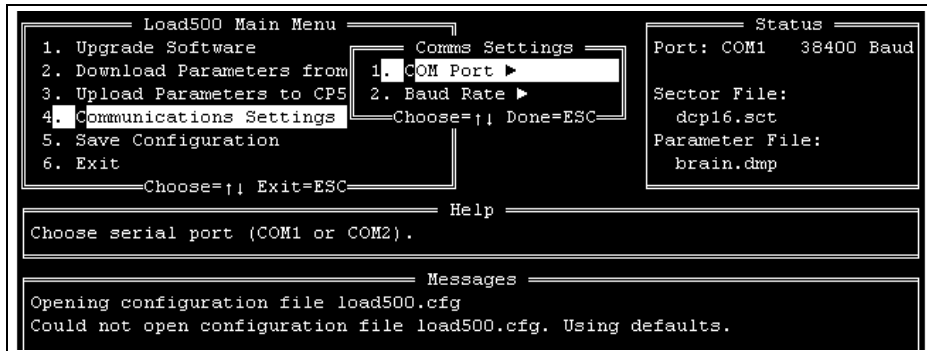
The middle section of the screen labelled **Help** provides a reminder of the function of the selected menu item.

The large lower portion of the screen called **Messages** provides information on the operation of the software. When the software first opens it will look for a previously stored configuration file (see section 2.4 below) and since this will not yet have been created will use the default settings shown in the Status block.

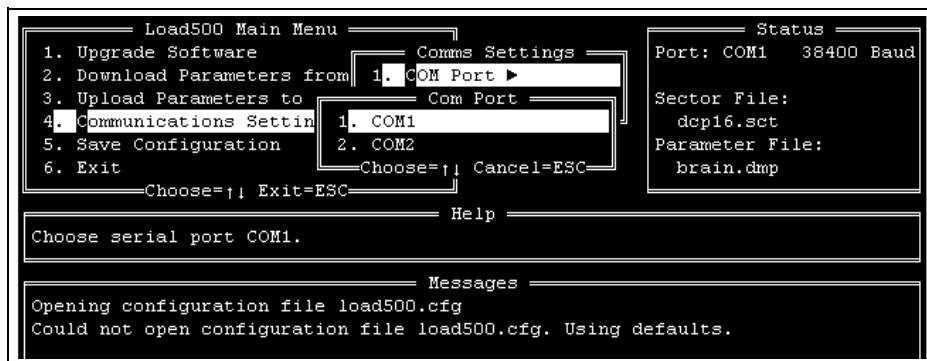
## 2.4 Initial settings - Saving Configuration

When Load500 is first run there will be no configuration file found and so the software will use the default settings shown in the status box. It is a good idea to begin by selecting **4. Communications Settings** on the menu to set the communication port and baud rate for future use. This can be done by moving the highlight bar using the up ↑ or down ↓ arrow key and pressing Enter, or by pressing the letter **c** (lower case only) or by pressing the number **4** on the keyboard.

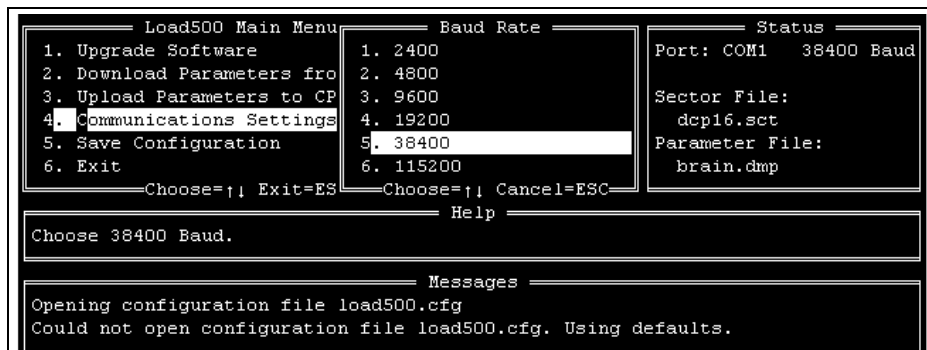
This will bring out the additional **Comms Settings** Menu allowing selection of the correct **1. Com Port** and **2. Baud Rate**.



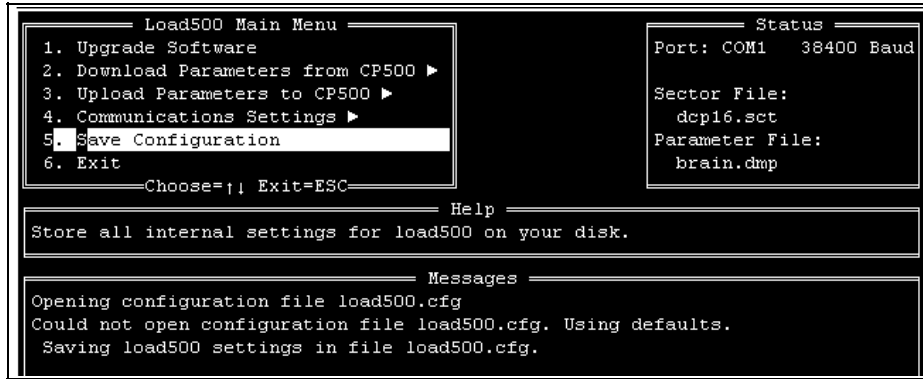
The choice of **Com Port** will depend on the individual computer and directing Load500 to use either of the ports can be done by selecting the correct port using the arrow keys. Pressing Enter will implement that selection and any change will be seen in the Status section of the screen.



The **Baud Rate** for the link can be set over a wide range and is a choice between speed of transfer and reliable, error free transmission. The default value of 38400 is a good first choice. If frequent errors in uploading and downloading files are encountered then changing to a slower baud rate may improve the situation.

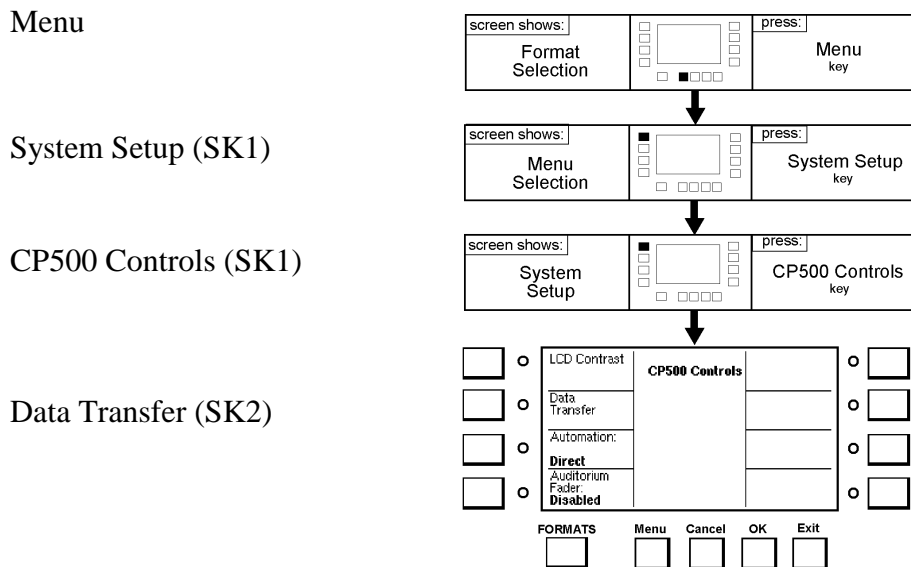


Having selected the correct port and baud rate then move back to the main menu using the Esc or left arrow keys and select **5. Save Configuration** so that these settings will automatically be recalled when the programme is opened again.



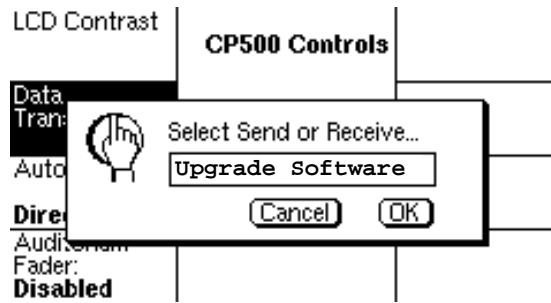
## 2.5 Connecting to the CP500

Before using any of the uploading and downloading options it is best to make sure that the data cable is connected according to Section 1.5 of this manual and that the CP500 is set in the correct Data Transfer mode. This can be done by selecting:





and then selecting  
**Upgrade Software**  
 (or **Connect to Load500**  
 in later CP500 software)  
 in the pop-up box and press OK.

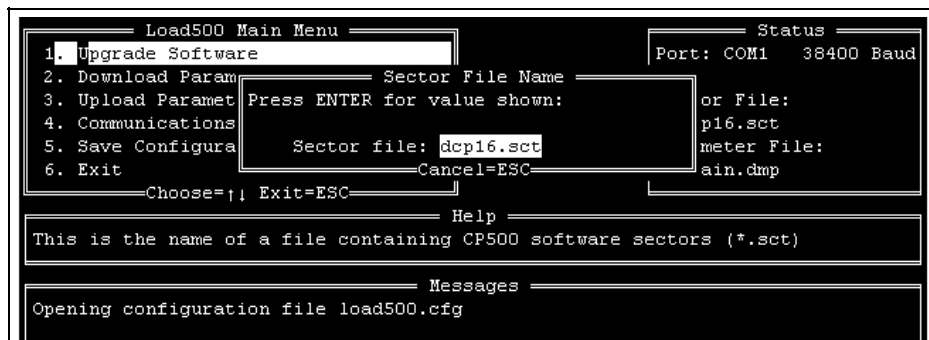


## 2.6 Software Upgrades

From time to time new operating software will be released for the CP500. This will be supplied in new units from the factory, but if it is necessary to upgrade existing units in the field this can be done using a file supplied to installers for use with Load500.

The new software will be supplied in a format called a sector file with the file extension .SCT.

Selecting the Upgrade Software option in the Load500 Main Menu will bring up the following screen where the name of the new software file can be entered.



To upgrade software, the name of the new .sct file should be typed in the space shown above. Typing in this name (with or without the .sct extension) and pressing Enter (or pressing Enter if the correct file name is already selected) will start the Upgrade process.

---

Note: The name dcp16.sct which may appear in the Status window as the default Sector File and which will also appear when the Upgrade Software option is first selected is not a valid file and should not be used.

---

If the CP500 is not set in the correct Data Transfer mode the Load500 software will continue to try to connect to the cinema processor until the correct mode is selected (see previous section). A Timeout count will be displayed in the message screen below the line

Connecting to CP500 ...

The Load500 screen will display the normal progress of the upgrade operation as shown below, as well as listing any problems such as the failure to make a connection.

In the following example the new software file is called newcode.sct.

```

Load500 Main Menu
1. Upgrade Software
2. Download Parameters from CP500 ▶
3. Upload Parameters to CP500 ▶
4. Communications Settings ▶
5. Save Configuration
6. Exit
Choose=↑↓ Exit=ESC

Status
Port: COM1 38400 Baud
Sector File:
newcode.sct
Parameter File:
brain.dmp

Help
Load new system software into the CP500, saving and reloading all parameters.

Messages
Opening configuration file load500.cfg
Upgrade from newcode
Opening sector file newcode.sct
Checking sector file newcode.sct
Opening COM port
16550A FIFO depth already set to maximum (14).
Connecting to CP500...

Connected.
Requesting parameters from CP500
Receiving parameters from CP500...
.....

Load500 Version 1.00 (c) Copyright 1996 Dolby Laboratories, Inc.

```

After checking the validity of the new software file Load500 establishes a data link with the CP500. The program then continues to automatically download all the system settings, A-chain alignment, B-chain alignment, User Formats, etc. from the CP500 so that these can be restored at the end of the upgrade process. At a baud rate of 38400 this process will take about 10 seconds. The display on the CP500 will indicate the progress of the data transfer.

These parameters will be stored in a temporary file called brain.dmp.

**If this file already exists from previously upgrading or downloading settings from a different processor then the previous file will be overwritten without warning.**

After storing the current settings from the CP500 Load500 will begin sending the new software file to the processor. Progress is indicated by the incrementing numbers of sent and acknowledged sectors in the messages window. All Done indicates the software upgrade process is complete.

At the end of the transfer process which at 38400 Baud should take about 40 seconds in total the Load500 screen will appear as shown below. The total number of sectors acknowledged will be the sum of the software sectors and the braindump sectors transferred to the CP500.

The CP500 screen will also be indicating the progress of the data transfer. This data transfer process should not be interrupted. Once all the data have been received and verified the CP500 will automatically reboot to begin operating using the new software.

```

----- Load500 Main Menu -----
1. Upgrade Software
2. Download Parameters from CP500 ▶
3. Upload Parameters to CP500 ▶
4. Communications Settings ▶
5. Save Configuration
6. Exit
-----Choose=↑↓ Exit=ESC-----

----- Status -----
Port: COM1 38400 Baud
Sector File:
newcode.sct
Parameter File:
brain.dmp

----- Help -----
Load new system software into the CP500, saving and reloading all parameters.

----- Messages -----
Saving parameter file brain.dmp.
ASCII Length = 14897, Data length = 2364 bytes.
A patch is not needed or not available for version 1.2.
Initiating sector transmission to CP500:
    468 software sectors, 5 braindump sectors
Acknowledged.
Sending sectors to CP500
Sect #  Ack   Nak   Timeout
    388   473
All Done.

-----
Load500 Version 1.00 (c) Copyright 1996 Dolby Laboratories, Inc.

```

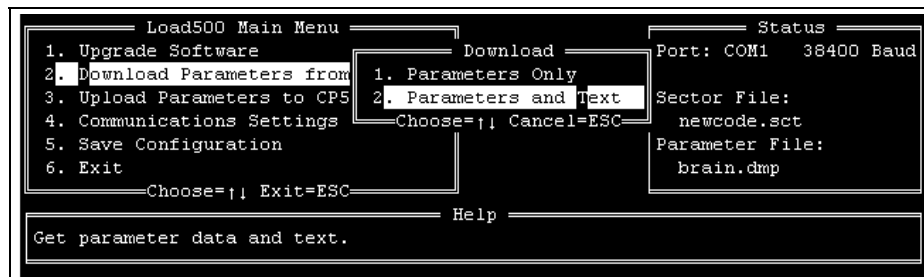
After a new software file has been used for the first time it may be useful to store that name within the Load500 configuration file so that it will automatically be selected for future upgrades. This can easily be done by selecting **5. Save Configuration** after the All Done message appears.

## 2.7 Downloading Parameters from the CP500

Load500 can be used to perform the same download function as has been described elsewhere in our Field Bulletin 187.

See Sections 2.4 and 2.5 of this manual for instructions on selecting the correct communication settings and establishing the data link with the CP500.

When selecting the menu option **2. Download Parameters from CP500** choice needs to be made between downloading only the parameters — that is only the data file — or the data file and a text version of all the CP500 settings.



Before downloading and saving the parameter file Load500 will ask for a name for the stored file. Any file name within the normal DOS constraints may be used. The file is stored in the same directory as the Load500 program unless a different path is specified in the file name. The full path name cannot exceed nineteen characters. **The .dmp extension is not automatically added by the Load500 program and should therefore normally be included in the typed file name.**

---

Note: The default file name brain.dmp should not be used. That name should be reserved for the temporary use of the Upgrade Software option as it is liable to be overwritten without warning.

---

Progress of the downloading will be shown both on the CP500 screen and on the Load500 screen.

### 2.7.1 Reading Text files

If the Upload Parameters and Text option is chosen, the text information downloaded from the CP500 is stored in the first part of the .dmp files and can be read or printed using a text editing program.

---

Note: The text generated with the data file is for information only and it is not possible to edit this text file to change any of the stored parameters.

---

## 2.8 Uploading Saved Parameters to the CP500

Load500 can be used to perform the same upload function as has been described elsewhere in our Field Bulletin 187.

See Sections 2.4 and 2.5 of this manual for instructions on selecting the correct communication settings and establishing the data link with the CP500.

When selecting menu option **3. Upload Parameters to CP500** choice needs to be made between uploading all or only a section of the previously stored data.

```

Load500 Main Menu                               Status
1. Upgrade Software                               Port: COM1  38400 Baud
2. Download Parameters from                        Upload
3. Upload Parameters to CP500                    1. Upload All
4. Communications Settings                       2. Upload EQ Only
5. Save Configuration                            3. Upload A-Chain Only
6. Exit                                           4. Upload Formats Only
Choose=↑↓ Exit=ESC                               Cancel=ESC
Sector File:
newcode.sct
Parameter File:
brain.dmp

Help
Send all system parameters to the CP500.

```

Load500 will then ask for the name of the stored file. The software has no facility for browsing from a selection of files on disc and the exact file name including the correct file extension must be known before running Load500. The program assumes that the file is stored in the same directory as the Load500 program unless a different path is specified in the file name. The full path name cannot exceed nineteen characters.

```

Load500 Main Menu                               Status
1. Upgrade Software                               Port: COM1  38400 Baud
2. Download Param                               Parameter File Name
3. Upload Paramet                               Press ENTER for value shown:
4. Communications                               or File:
5. Save Configura                               wcode.sct
6. Exit                                           meter File:
Choose=↑↓ Exit=ESC                               ain.dmp

Help
This is the name of a file in which CP500 parameters are stored.

```

Progress of the uploading will be shown both on the CP500 screen and on the Load500 screen.