

# DCP 2000

## DIGITAL CINEMA SERVER JPEG2000 - MPEG2

### Multi-File Playback

JPEG2000 Movies and Pre-Show

MPEG2 MXF Interop Movies and Pre-Show

### 2D and 3D Movie Playback

3D JPEG2000 Movie Playback

REAL D, XpanD and Dual-Projectors Supported

### 2k and 4k Resolution Playback

2k and 4k File Playback

4k File at 4k Playback Resolution (Option)

### Enhanced Security

TI's CinELink II™ Strong Link Encryption

Thomson's NexGuard™ Forensic Watermarking

Philips' CineFence™ Forensic Watermarking

FIPS 140-2 Level 3 Certified

### Captioning Device Control

External Control of Captioning Devices

WGBH & PCS (Option)

**#1 In Installations**  
Over 4800 Units in Operation



The DCP-2000 cinema server provides superior reliability, image quality and an unmatched feature set. Each DCP-2000 reflects Doremi's eleven years of image server design and manufacturing experience, and the benefits of supporting the world's largest cinema server installation.

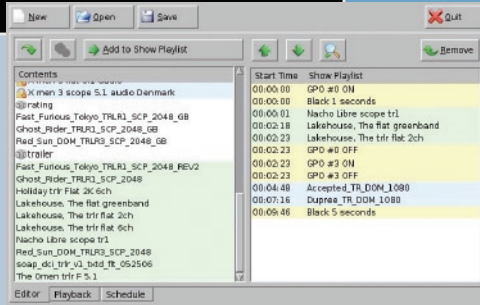
The DCP-2000 supports JPEG2000 and MPEG2 files. In addition it features REAL D, XpanD and dual-projector 3D playback, external control of captioning devices and 4K resolution playback.

Each DCP-2000 server includes the CineLister software utility that provides effortless scheduling and playlist administration. Playlists can include both JPEG2000 and MPEG2 movie files, and pre-show content files.

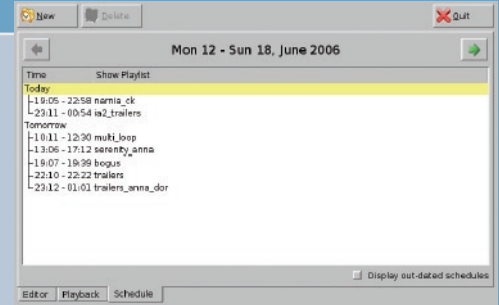
The DCP-2000 was the first commercially available server capable of playing JPEG2000 digital movies conforming to DCI specifications. Today, it is by far the most installed cinema server with over 4800 units worldwide.

**doremi**  
cinema

# SOFTWARE



Event Editing Screen



Play List Scheduling Screen

## CineLister Software

CineLister allows the operator to build and play composition playlists as well as full session playlists. Playlists can include both JPEG2000 and MPEG2 movie files and pre-show content files.

The graphic user interface simplifies the management of image files and creation of new image clips. CineLister's extensive playlist creation capability can be used for on-line playback and play list scheduling.

# SPECIFICATIONS

## PLAYBACK

- JPEG2000 2K or 4K movie and pre-show file playback at 2K resolution
- 12-bit 444 (XYZ, RGB) on dual link HD-SDI
- MPEG2 MXF interop movie, pre-show and alternative content file playback
- JPEG2000 4K movie file playback at 4K resolution (option)
- 3D - JPEG2000 movies and 48p playback via Dual 10-bit 422 (YPbPr/YCxCz)

## SECURITY

- TI's CineLink II™ Strong Link Encryption
- Thomson's NexGuard™ Forensic Watermarking
- Philips' CineFence™ Forensic Watermarking
- FIPS 140-2 Level 3 Security Certified

## INTERFACE

- Gigabit Ethernet for file transfer
- Gigabit Ethernet for control & subtitling
- RS-422 serial control port
- USB2.0
- External control of captioning devices
- WGBH & PCS (Option)

## STORAGE

- Up to 2TB of RAID5 storage

## AUDIO

- AES/EBU audio 16 channels
- Single DB-25 connector
- Balanced or unbalanced analog audio 8 channels (two options available)
- Single DB-25 connector internal board
- External digital audio (DB-25) to analog audio converter in a 1RU rack mount chassis

## GPIO

- 8 optically isolated inputs
- 8 open collector outputs

## VIDEO OUTPUT

- Dual link HD-SDI
- with physical link encryption

## OUTPUT RESOLUTION

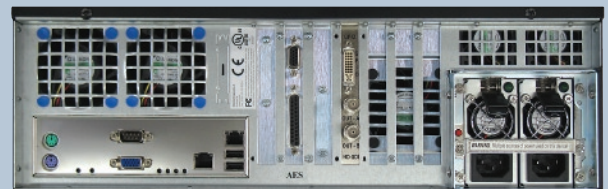
- Dual link
- 2048 x 1080 24p 4:4:4 12-bit
- Two single links
- 2048 x 1080 24p 4:2:2 10-bit

## POWER

- Dual-Redundant Power Supply
- 100-240VAC 50-60Hz (350W max)

## DIMENSIONS

- 3U Rack Unit
- 19" x 20.5" x 5.25" inch
- (48 x 52 x 13 cm)



Rear Panel

Doremi Cinema LLC. Burbank, California USA  
 tel +1-818 562-1101 - [www.doremicinema.com](http://www.doremicinema.com)  
 Doremi Labs, Europe Sophia Antipolis, France  
 tel +33 (0) 492 952 830 - [www.doremilabs.fr](http://www.doremilabs.fr)  
 Doremi Labs LLC - Japan Tokyo, Japan  
 tel +81 (0) 3 3370 0401 - [www.doremilabs.co.jp](http://www.doremilabs.co.jp)

